

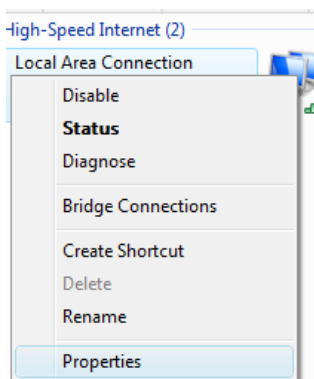


SUPPORT NOTE #1:

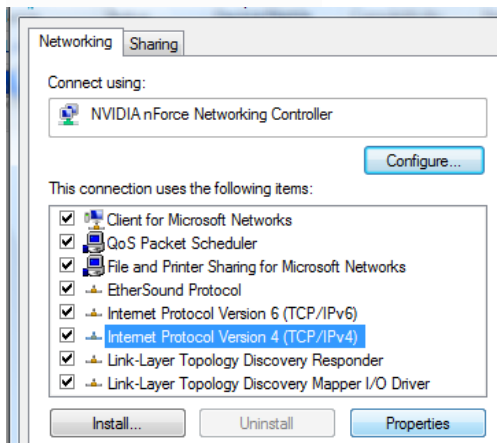
PYKO-Out: Setting-Up a Connection

The PYKO-out ships with a factory default IP address of **192.168.0.100**. Unless your computer is already in the 192.168.0.X network address pool and no other devices are using this same address you will first need to change the IP address of your computer in order to access the PYKO and configure its settings.

- 1) Locate "network settings." (On most systems this can be found under *Menu: Settings/Network*. Please check your computer Owner's Manual.) Once there, right click on the **Local Area Network** icon and select **Properties**.

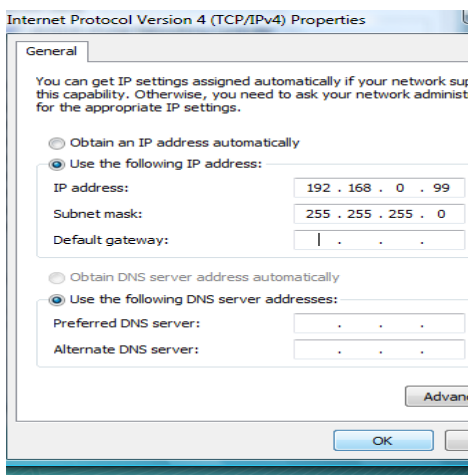


- 2) Select **IPv4** and **Properties**



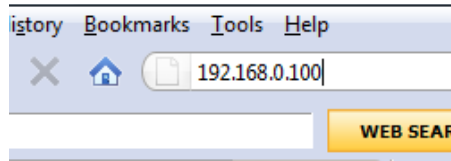
- 3) Manually enter an address not already in use avoiding 1 and 255 in the last field. In this case we are using **192.168.0.99**. The subnet mask is **255.255.255.0**.

Hit **OK** twice and close out of the local area connection menu. Note that you have changed your IP address and may now not be on the Internet.

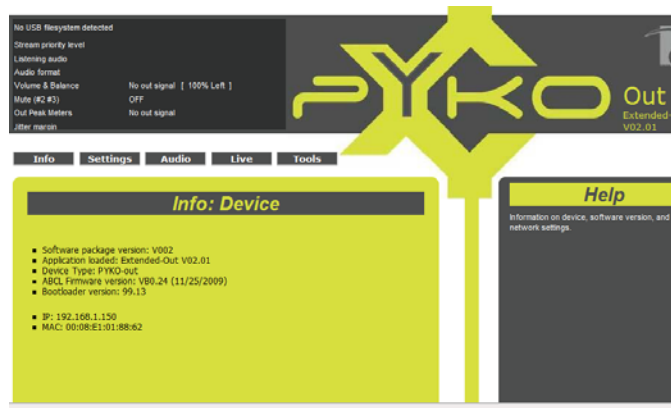




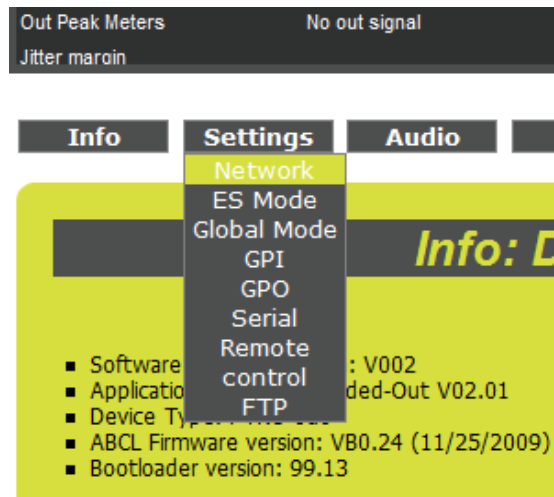
- 4) Connect the PYKO-out to your computer with a cross over network cable. In your web browser type the PYKO IP address **192.168.0.100**.



- 5) Your PYKO-out should be viewable as the image on the right:

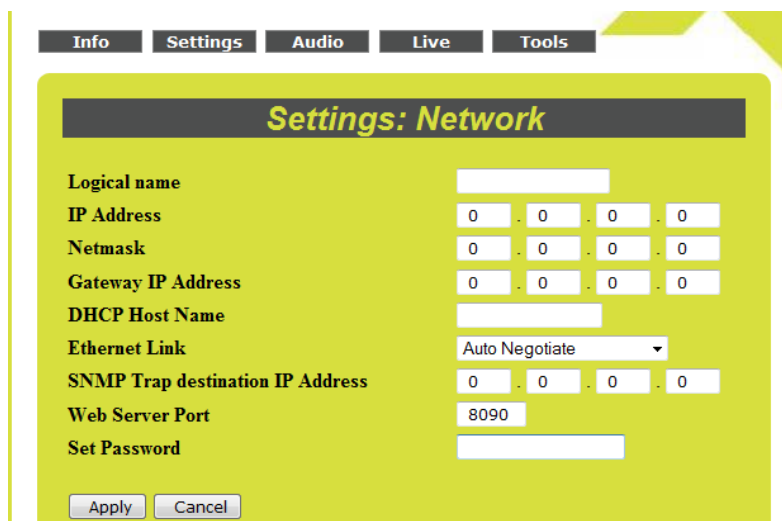


- 6) From the **Settings** tab, select **Network**

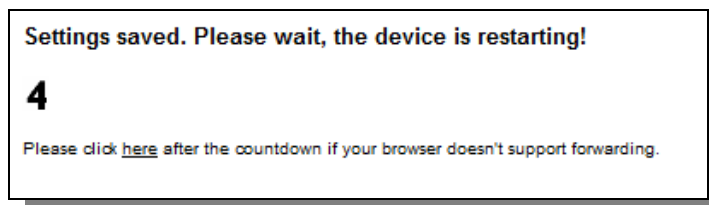




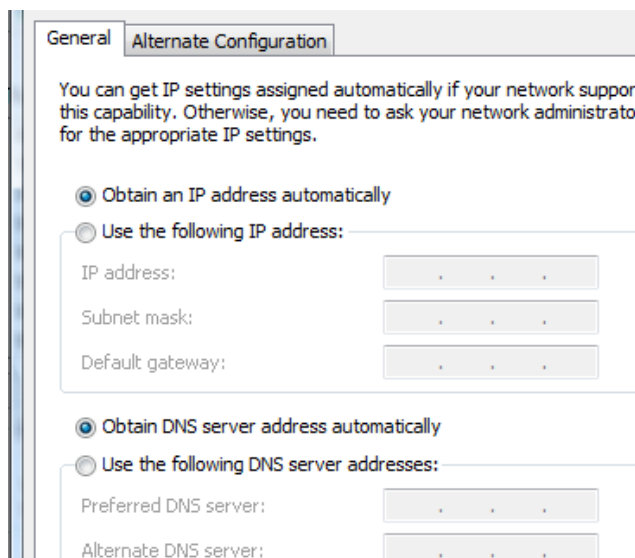
- 7) Enter the desired IP address, Netmask, and Gateway IP address. Optional information includes DHCP Host Name and assigned password.



- 8) Hit Apply. Your PYKO-out will reboot in about 4 seconds and the new settings will be saved.



- 9) To return your computer to its original IP settings, repeat steps 1 through 3 and enter your network IP address or select "obtain IP address automatically". Hit OK twice and close out of the Local Area Connection Properties.



Enter the new IP address for the PYKO-out in your web browser.

Congratulations! You are now connected to your PYKO-Out on your network.