

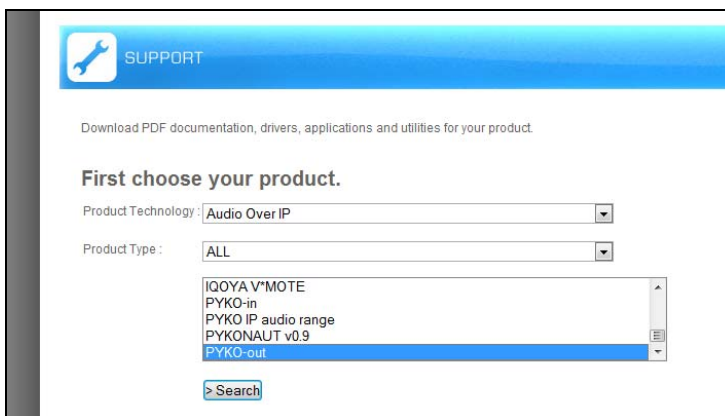


SUPPORT NOTE #2:

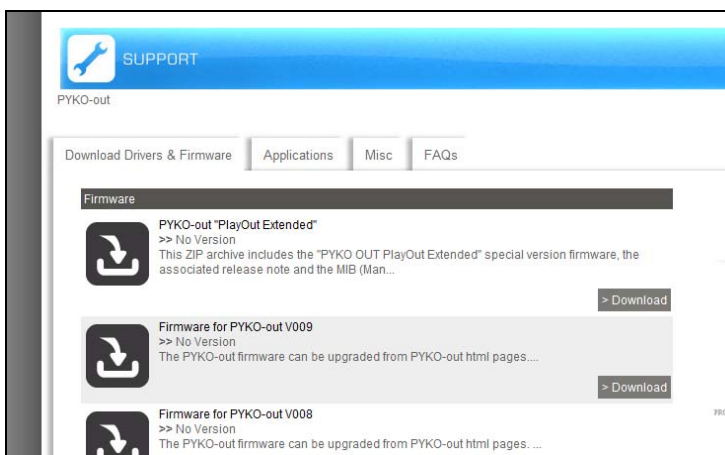
PYKO-Out: Updating the Firmware

- 1) The PYKO-out Firmware Extended-Out is available at www.digigram.com/support/.

Select **"Audio Over IP"**, then **"PYKO-out"**.

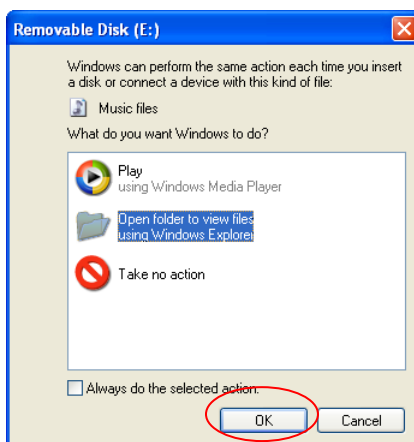


The search results will direct you to the Download Drivers and Firmware tab. Download the PYKO-out "PlayOut Extended" firmware file to a folder on your computer.



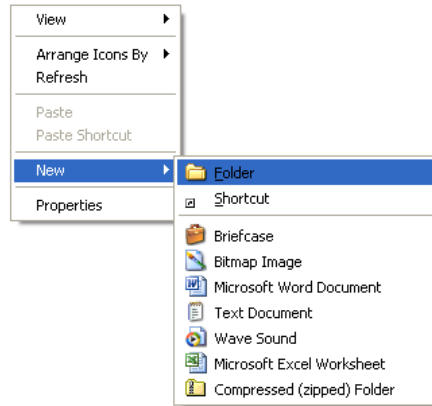
- 2) Format a USB Drive. Insert the USB thumb drive into the USB port of the computer. To work with the PYKO the drive must be FAT32 and no larger than 16G. For internal mounting it must be no larger than 1.75 inches maximum from tip to end.

Select **"Open folder to view files"** and hit **"OK"**





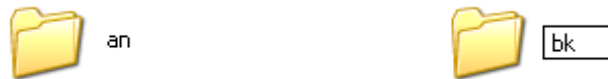
- 3) Right click and select **"New"** then **"Folder"**



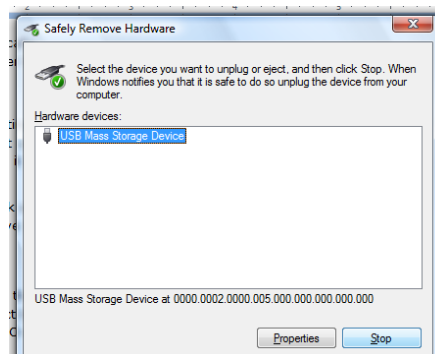
- 4) **"New Folder"** is automatically highlighted, rename folder to **"an."** This is where all Announce or Stream Priority 2 playlists are stored.



- 5) Repeat steps 3 & 4 creating another new folder and name it **"bk"**. You should have two folders, one titled **"an"** and one titled **"bk."** This is where all Backup or Stream Priority 3 playlists are stored. You should now have two folders named **"an"** and **"bk"**



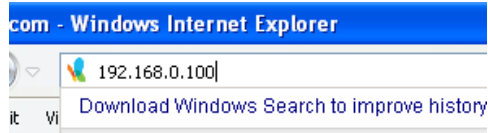
- 6) Close the Removable Disk screen and select **"Safely Remove USB Mass Storage Device – Drive(X:)"**.



- 7) Connect the PYKO-out to the power supply and connect the network cable to the PYKO-out.



8) Open your web browser and type in the PYKO-out IP address. The factory default address is 192.168.0.100



9) Hit return and the PYKO-out will display in Internet Explorer

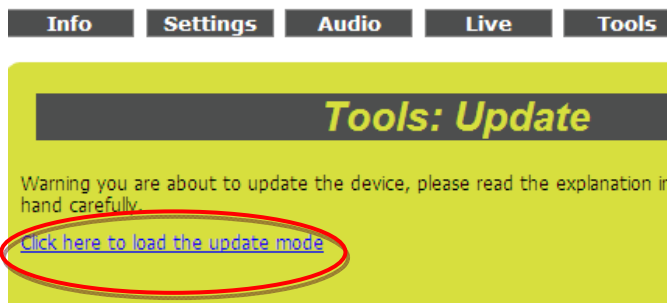


10) Select Tools then Update

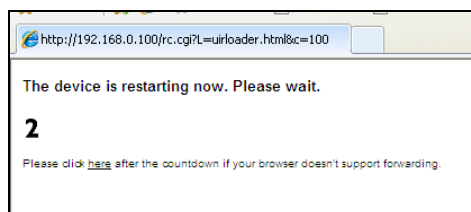




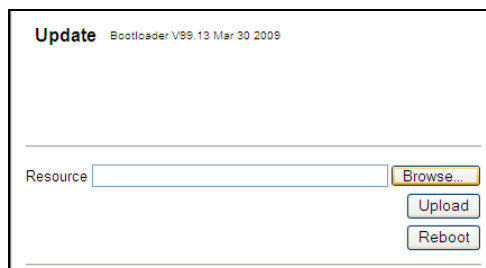
11) Select "Click here to load update mode"



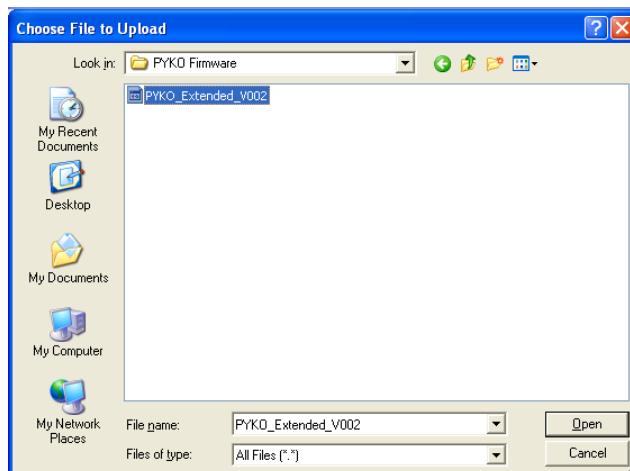
12) The unit will reboot and count down from 4



13) Select Browse



14) Browse to the file location of the PYKO Extender bin file. Select "PYKO_Extended_Out" and "OK".

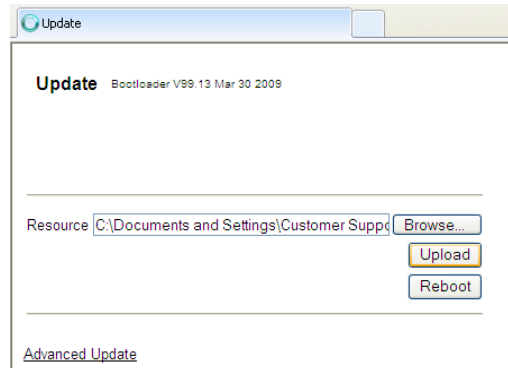




15) Select "Upload"



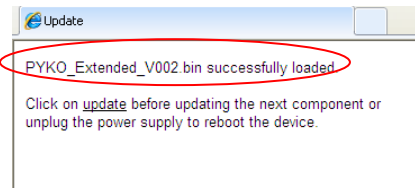
AFTER SELECTING "UPLOAD" DO NOT INTERRUPT THIS PROCESS UNTIL DISPLAYED AS SUCCESSFULLY FINISHED AS THIS WILL CAUSE DAMAGE TO THE PYKO



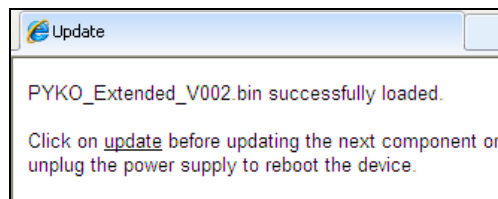
16) Once properly finished it will display
"PYKO_Extended_V002.bin
successfully loaded"



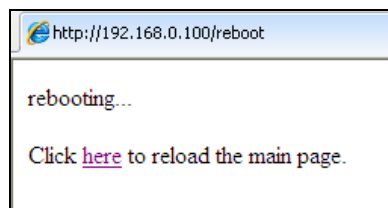
YOU MUST WAIT UNTIL THIS IS DISPLAYED, OTHERWISE THE UNIT WILL BE DAMAGED. THIS IS NOT COVERED UNDER WARRANTY.



17) Click "Update" then "Reboot"

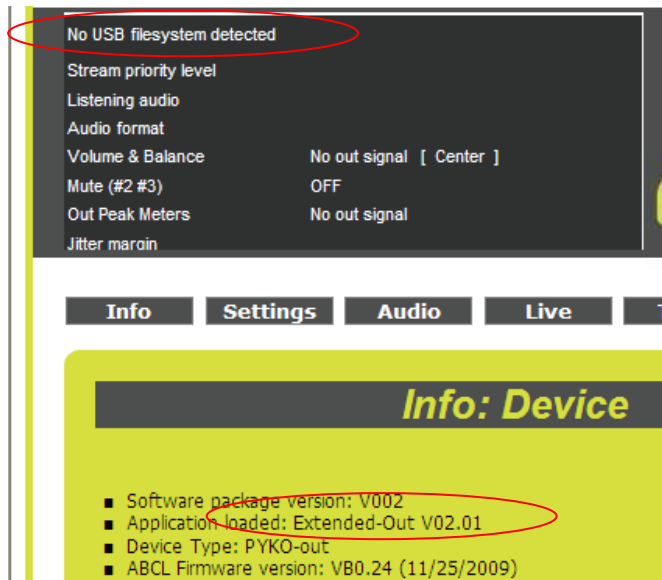


18) Click "here" to open the PYKO-out
html page





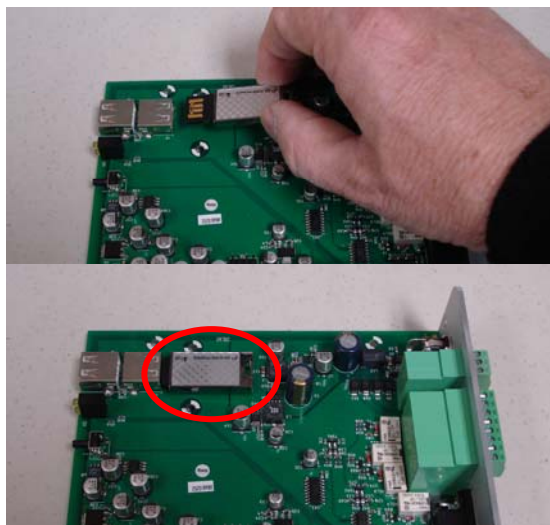
- 19) Insure the PYKO-out displays firmware version "Extended-Out" and "No USB file system detected"



- 20) The USB drive can be plugged in externally.

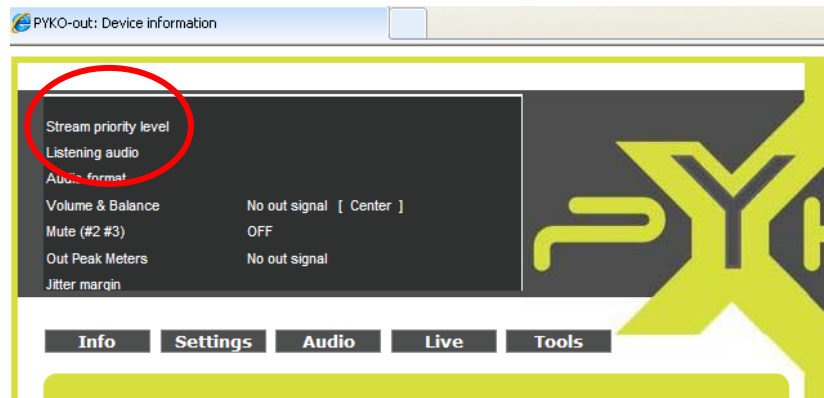
For **internal mounting**, unplug and disconnect the PYKO-out.

- 21) Unscrew the back panel of the PYKO-out
- 22) Pull out the PCB from the PYKO metal housing.
- 23) Insert the formatted USB drive into the internal port shown on the right.
- 24) Reinsert the PCB into the housing and screw the back panel down
- 25) Reattach the power supply and network cable



26) Open your web browser and type in the PYKO-out IP address in the tool bar opening the PYKO-out device page. The factory default address is 192.168.0.100. Insure it says “stream priority level” in the upper left status bar.

If “**No USB system detected**” is displayed set aside to repeat the process – the USB drive is not being detected or the firmware was not installed properly



Congratulations!
Your PYKO-out has been successfully updated.